

The Rodin Wing

The Thinker

静岡県立美術館

Shizuoka Prefectural Museum of Art



Shizuoka Prefectural Museum of Art and Rodin

In 1986, the Shizuoka Prefectural Museum of Art opened, specialized on a theme of “landscapes of East and West from the seventeenth century onward”. Later, we added “expression of the human body” to our collection theme, and installed the Rodin masterpiece, *The Burghers of Calais*, in our main entrance hall. By this occasion we began collecting works by Rodin, establishing a close relationship with the Rodin Museum, Paris.

The Rodin Wing opened March, 1994. In the uniquely shaped, sunlit exhibit hall we can enjoy 32 works by Rodin.



Auguste Rodin

In 1840 Rodin was born in Paris. He failed to enter Ecole des Beaux arts (French National School of Fine Arts) in Paris many times. He engaged working on public monuments in Brussels (Belgium) with sculptor Carrier Belleuse. In 1880, he was commissioned by the French governments to produce the gate of Museum of Decorative Arts. Originally *The Gates of Hell* started through this commission, inspired by *The Divine Comedy* by Dante. His innovative works always provoked many scandals. In 1917, almost 10 months before his death, he was married to his lifelong companion, Rose Beuret. Today, we can see *The Thinker* on the tomb of Rodin in Paris.



Rodin Wing

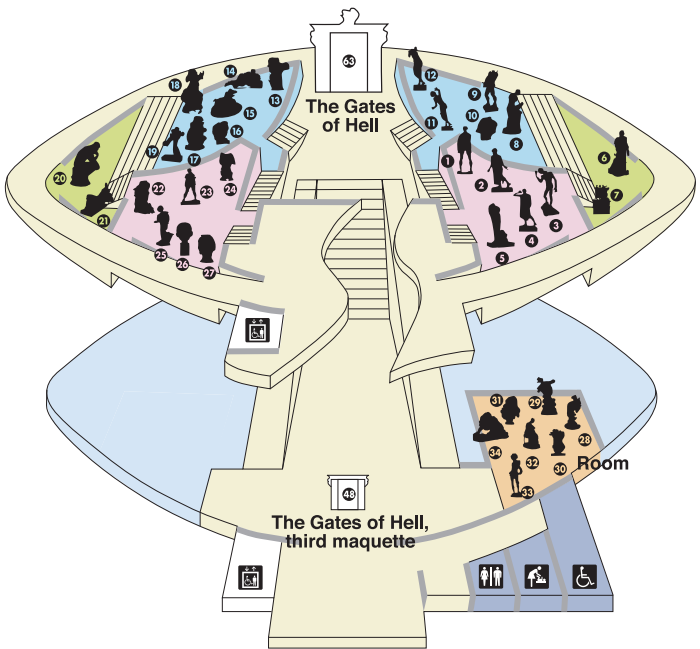
Sculptures of RODIN

1. The Burghers of Calais, Jean d'Aire
2. The Burghers of Calais, Jean de Fiennes
3. The Burghers of Calais, Pierre de Wissant
4. The Burghers of Calais, Jacques de Wissant
5. The Burghers of Calais, Andrieux d'Andres
6. The Burghers of Calais, Eustache de Saint-Pierre
7. The Burghers of Calais, first maquette
8. The Muse of Whistler
9. Naked Balzac
10. Colossal Head of Balzac
11. The Spirit of Eternal Repose
12. Torso of the Spirit of Eternal Repose
13. Torso of the Shade
14. Paolo and Francesca
15. Fugit Amor (Fugitive Love)
16. Head of the Shade
17. The Caryatid with a Vase
18. Cybele

19. Torso of the Centauresse and a Despairing Adolescent
Torso of the Centauresse and a Female Torso
Torso of the Centauresse and a Study for Iris
20. The Thinker
21. Bacchanal
22. Study for La France
23. Bastien-Lepage
24. Torso of a Seated Woman called the Victoriaand Albert Museum
25. Claude Lorrain
26. Head of Baudelaire
27. Grand Mask of Hanako

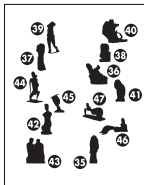
Room

28. CARPEAUX, J.-B./Neapolitan Fisherboy
29. CARRIER-BELLEUSE, A.-E./Satyr Carrying off a Nymph
30. RODIN, A./Young Girl with Roses
31. CARPEAUX, J.-B./Mater Dolorosa
32. DALOU, A.J./Nursing Parisienne
33. FRÉMIET, E./Serpent Charmer
34. BARYE, A.-L./Lion Crushing a Serpent



Bridge Gallery

35. GAUGUIN, P./Oviri
36. ROSSO, M./A Patient at Hospital
37. BOURDELLE, E.-A./Head of Apollo
38. BOURDELLE, E.-A./Bust of Rodin
39. MAILLOL, A./Torso of Ile de France
40. CLAUDEL, C./Wave
41. BRANCUSI, C./Mademoiselle Pogany II



42. LEHMBRUCK, W./
Small Torso of a Woman
43. BARLACH, E./Reading Monks III
44. LIPCHITZ, J./Mother and Child
45. ARCHIPENKO, A./
Study for Woman Powdering Herself:
Head, Construction with Crossing Planes
46. MOORE, H./Reclining Figure
47. GIACOMETTI, A./Reclining Woman

The Gates of Hell

The sixth cast of Rodin's representative work.

In 1880, *The Gates of Hell* which the French government intended Rodin to make as a gate for the planned Museum of Decorated Arts is one of his masterpieces consisted of more than 200 bodies, featuring the theme *The Divine Comedy* of Dante.

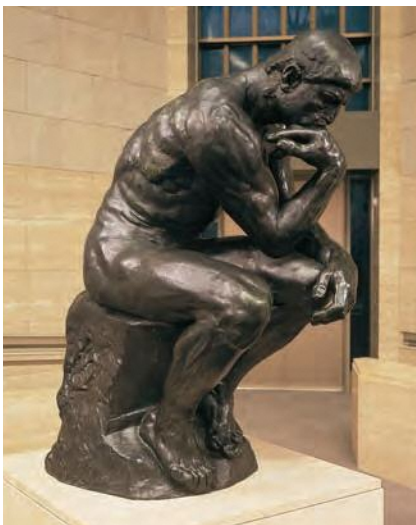


The Thinker

Astonishing work.

The Thinker which was a part of *The Gates of Hell* was initially displayed under the title of *The Poet*.

Following increasing popularity, three further statues of *The Thinker*, in 3 sizes (large, medium and small), were made after it was isolated from the Gates.



Fugit Amor

What Rodin expressed through his Marble works.

Fugit amor is the Latin for fugitive or transient love and it represents a love relationship between men and women frankly.



The Burghers of Calais

The grief of citizens seems to be heard from this work.

The city of Calais asked Rodin to make a set of the statues of the six citizens to commemorate them who are the heroes of the Hundred Years' War between France and England.

However, the experimental work by Rodin was a set of the figures of the people suffering with grief and that was opposite from heroic representation.

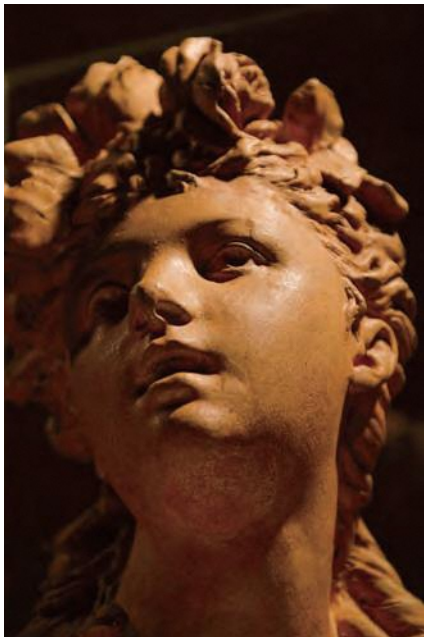
The world had accepted this *The Burghers of Calais* after Rodin's death.



Young Girl with Roses

A terra-cotta (unglazed earthenware)

This is one of the sculptures made by young Rodin while he was studying in Belgium. The flowers in the girl's hair and lips being slightly opened suggest sensual grace.



It has been decreed by the law of France that every bronze work of Rodin cast under the two conditions; to use the original molds made of plaster or terra-cotta by Rodin himself; to limit the number of cast up to twelve altogether in the world, will be recognized as an original work of Rodin by the Rodin Museum's administrative management.



© By MUSEE Rodin 1983



E. GODARD Fondr

Paolo and Francesca, the characters of *The Gates of Hell*, have attracted many artists by the theme of tragic love.

It is engraved into the pedestal of the area under the toes of Paolo that the casting of the work was done by the Rodin Museum in 1983 in addition to the signature of the copyholder.

In addition, there is the signature of Emile Goddard, who performed the casting, on the pedestal which is under Francesca's buttocks.



A. Rodin No 8/8

The pedestal of the sculpture also shows the casting number and the signature of Rodin. The casting number 8/8 means that this is the eighth one of the 8 casts.

Information

Opening Hours ● 10:00-17:30 (admission ends at 17:00)

Day Closed ● Mondays (If Monday is a Public Holiday the museum is open).
Closed during New Years Holiday and during exhibit changes.

Admission ● Permanent Exhibits + The Rodin Wing.

Classification	Individuals	Group
Adults	300 yen	200 yen
University/College students and below, Over 70s	Free	

Admission fees may vary for different exhibitions.
(Admission for children up to junior high school age is free of charge.)

Free Admission ● People with a physical or mental disability certificate are free
(including 1 attendant).

Barrier-free ● Wheelchairs are available upon request at the information desk.
Parking lot, restrooms, elevator for handicapped people are available.
"Touch tour" for blind visitors is available. (Prior reservation required.)

A c c e s s ● ◎ About 6 minutes by Shizutetsu bus "Bound for Kenritsu-Bijyutsukan" from JR Kusanagi Station.

◎ From South exit of JR Shizuoka Station about 20 minutes by taxi or about 30 minutes by Shizutetsu bus from the North Exit.

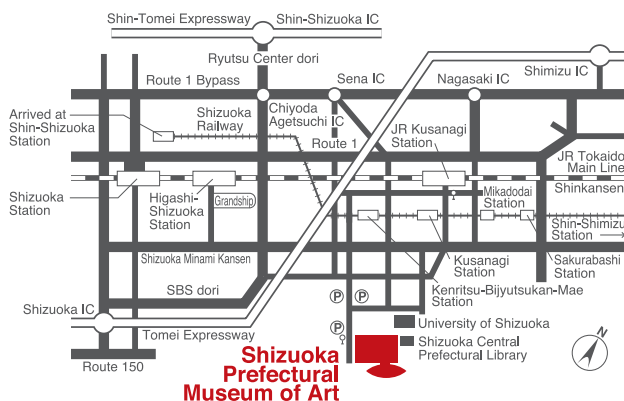
◎ From JR Higashi-Shizuoka Station about 15 minutes by taxi or about 20 minutes by Shizutetsu bus.

◎ From the "Kenritsu-Bijyutsukan-mae" station about 15 minutes on foot or about 3 minutes by Shizutetsu bus.

◎ From the Tomei Expressway Shizuoka IC or Shimizu IC it takes about 25 minutes. From the Shin-Tomei Expressway Shin-Shizuoka IC it takes about 25 minutes.

The bus will first stop at the "Promenade" and then "Kenritsu-Bijyutsukan".
Visitors can get off at the "Promenade" bus stop and explore the sculpture promenade.

P a r k i n g ● There are about 400 spaces (including a large space for buses) close to the sculpture promenade.



静岡県立美術館
Shizuoka Prefectural Museum of Art